



*Discover
unlimited
beauty*

Contemporary villa with the best views on Portugal's #1 Golf Course

Overlooking the 6th and 7th holes of the #1 rated Jack Nicklaus Signature North Course at Monte Rei Golf & Country Club in the Eastern Algarve, Villa Panorama offers unique panoramic views all the way to the Atlantic Ocean. Utilising the highest quality construction materials and meticulous workmanship, the villa provides a luxurious and relaxed lifestyle, perfectly blending with the surrounding natural landscape.



'We have loved owning and spending time at Villa Panorama – our family has had the best holidays and Monte Rei is always a magnificent place to spend time...'



Monte Rei Lifestyle

Monte Rei is a new generation of expertly curated residences inspired by the lifestyle of the modern consumer. It offers the discerning traveller and golf enthusiast the ultimate in comfort and convenience in Portugal's most iconic golfing destination.

Location

Monte Rei is set in the hills northeast of Tavira towards the Spanish border in the east Algarve. With beautiful mountains to the north and the ocean to the south, the location is stunning from every angle.

This is the gentler, more traditional Algarve. Peaceful and abundant with nature, a place for those seeking wellbeing and relaxation. The world class sporting facilities are set amongst fabulous countryside and the idyllic coastline of the Ria Formosa.

Faro International Airport: 50 mins

Seville International Airport: 80 mins



Features

Villa Panorama sits on a plot of 2,368m² with an internal area of 600m² and total construction area of 900m². Each of the 5 bedrooms comes with an en suite bathroom and dressing area, under-floor water heating and air conditioning throughout.



Bedroom 1

Over 31m² of open space, with double vanity units, separate dressing areas.

Bedrooms 2 & 3

Each 22.5m² with en suite facilities and dressing area.

Master Bedroom 4

Over 78m² of space, with sitting area looking over the golf course, substantial built-in dressing area, freestanding bath, log effect fire.

Bedroom 5

32m² with en suite facilities, built-in robes.

Bar and entertainment room

Nearly 30m² area with 4 seater bar and sofa area.

Cinema room

17m² cinema room

Sauna and Gymnasium

Laundry room

Separate fully equipped room off the garage

Double Garage

61.5m² with additional storage facilities

Living, Dining and Kitchen

Large (77m²) open plan area, Porcelanosa tiles throughout, stairs in natural stone, top range log effect gas fire. Fully integrated Leiken Alessi – Valcucine units with siltstone top

Outdoor dining, BBQ terrace

27m² enclosed area with cutting edge BBQ, seating and sink.

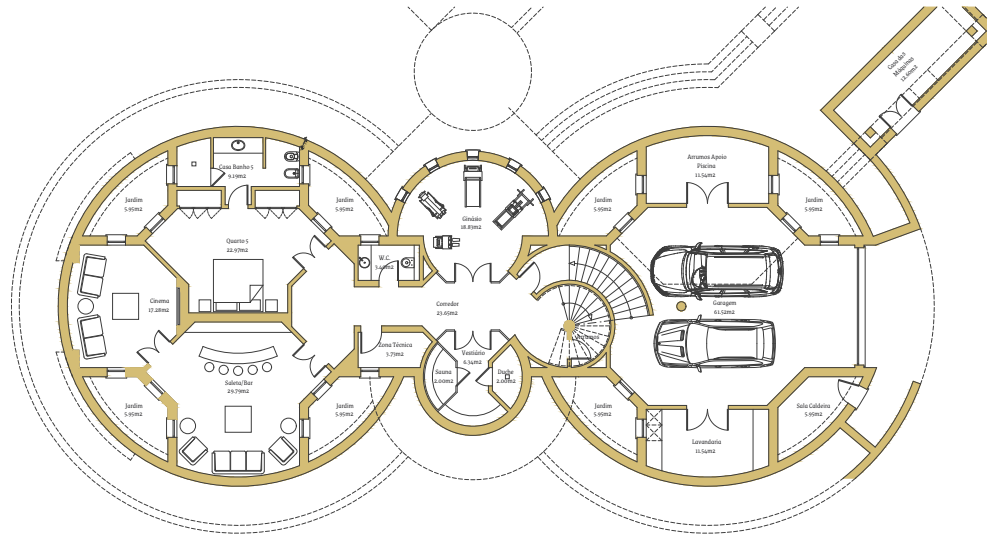
Top Floor Lounge

Stunning 95m² lounge with three terraces providing 3600 panoramic views of the estate.

Floor plans

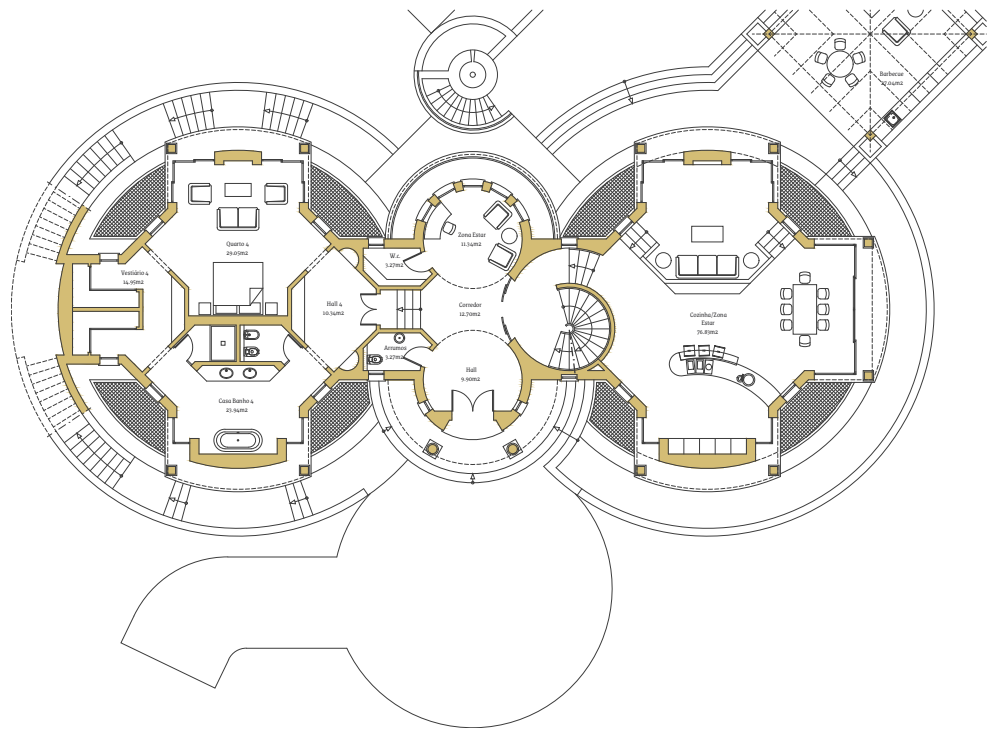
Área Construção da Cave

290.78 m²



Área Construção do R/Chão

249.57 m²



Área Construção do 1º Andar

196.44 m²

